

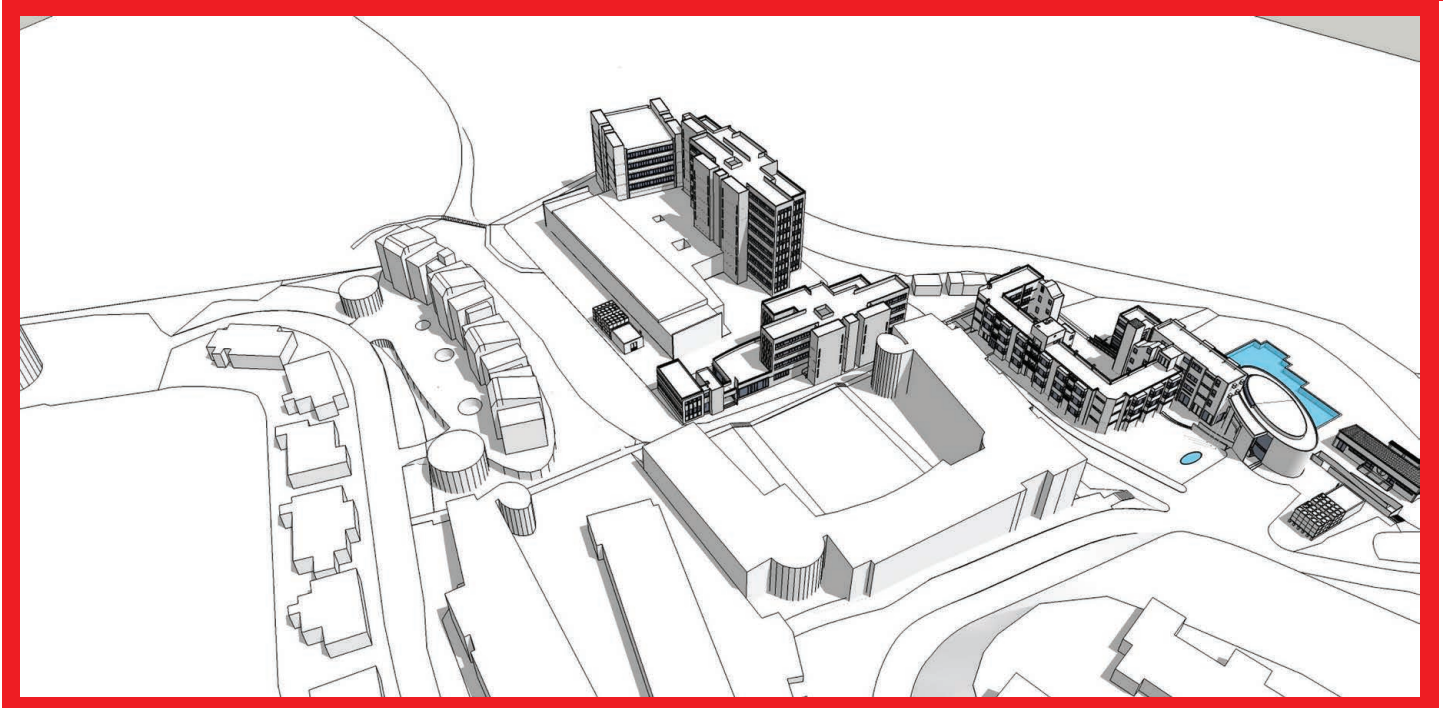


SPOTLIGHT 愛心之光


二零一四年十二月 Dec 2014

匡扶智障 FOR people with intellectual disabilities

匡智會訊 Association News 



匡智50 共融共創 Celebrating the 50th Anniversary of Hong Chi

 2015年，是匡智會成立五十周年的重要里程碑。


回首過去，我們由一個只照顧四位有特殊學習需要的小朋友學習班；發展至今時今日，我們在全港開設逾八十個服務單位及特殊學校，服務約7,000位不同年齡及不同程度的智障人士及他們的家人。

「以孩子的需要為先」不單是匡智會

創辦人彭勵治夫人的格言，亦是我們多年來的服務信念。有見於社會對復康服務的需求殷切，我們很慶幸社會福利署通過本會原址重建松嶺村的申請，同時感謝香港賽馬會慈善信託基金慷慨撥捐六億元，資助此項特別計劃在未來幾年間於松嶺村增設834個復康服務名額，包括學前兒童服務、早期教育及訓練、職業訓練、日間服務、宿舍服務及庇護工場，以照顧不同年齡智障人士的需要，為智障人士提供更完善及整全的服務。此

外，我們亦會積極為更多職業訓練課程申請專業認證，提升畢業學員的認可資歷，讓他們更有自信投身社會，活出豐盛人生。

在未來的日子，我們將繼續用心耕耘，開拓更多互動平台及發展機會，協助智障人士融入社會，展翅飛翔。衷心希望各企業伙伴、團體友好，以至社會大眾能夠繼續關懷和接納智障人士，與我們並肩同行，攜手匡扶智障。

 The year 2015 marks the 50th anniversary of Hong Chi.

In retrospect, Hong Chi started up as a small class for merely 4 children with special learning needs, and has now grown to serve some 7,000 people of all ages and grades of intellectual disabilities, as well as their families and caretakers, in our over 80 service units and schools.

"Children come first" was not only the vision of Lady Bremridge, Founder of Hong Chi Association; it is also the service motto that we have been working so hard to uphold throughout the past decades. In

view of the apparent needs for rehabilitation services, we are glad that our proposal for redeveloping Pinehill Village under the Special Scheme has been recently approved by the Social Welfare Department. An additional 834 rehabilitation service places for all ages and all grades, in areas of pre-school services, early education and training, vocational training, day care, hostel services, and sheltered workshop, will be provided at Pinehill Village in the near future. Our genuine appreciation goes to The Hong Kong Jockey Club Charities Trust for the benevolent funding support of \$600 million for this redevelopment project. Besides, we will continue to

promote the proper place of our trainees to gain the proper recognition of their abilities through acquiring official accreditation for more of our vocational training programmes, assisting people with intellectual disabilities to become contributing members of society with confidence.

In the years to come, we will work diligently to create more interactive platforms and opportunities for our trainees to develop their talent to the fullest. We sincerely seek the generous support from the corporations, organizations and the general public in assisting people with intellectual disabilities to fully integrate into society and to lead a meaningful life.

透過原址重建及擴展松嶺村，本會將為更多智障人士提供適切服務，以滿足其全人發展需要。
Through redeveloping Pinehill Village, our Association aims to provide more comprehensive services to cater to the needs of people with intellectual disabilities.



匡智學生獲邀參加北方信託舉辦的年曆繪畫比賽，以慶祝該公司成立125周年。十三位得獎學生的作品獲印製成2015年年曆，從而展現其藝術創作天份。

Hong Chi students were invited to join an art contest organized by Northern Trust to celebrate its 125th anniversary. 13 selected designs will represent each month of the year in the company's 2015 calendar, to showcase the students' unique artistic talent.



感謝地產代理監管局舉辦「沙田城門河慈善跑」，並成功籌得十二萬八千元善款，以資助匡智松嶺學前兒童中心添置復康器材，讓有特殊需要的小朋友及早得到適切教育及訓練。

Sincere thanks to Estate Agents Authority for their generous donation of \$128,000 raised at the "Shatin Shing Mun River Charity Run" to support Hong Chi Pinehill Pre-school Centre in purchasing rehabilitation equipment for children with special learning needs.



九龍及港島區聯網舉辦綠色「智」多FUN環保嘉年華，透過互動遊戲及展覽推廣環保及循環再用的訊息，鼓勵市民實踐綠色生活。

The Kowloon and Hong Kong Island Cluster organized a fun-filled environment fair to encourage community members to develop low carbon lifestyles through a wide range of interactive games and exhibition.



匡智松嶺學校舉行運動會，讓學生一展身手。

Students from Hong Chi Pinehill School demonstrated their sporting talents in a sports day.



藝康集團義工與學生同遊「電車河」，飽覽港島區景色！

Ecoblab volunteers and Hong Chi students enjoyed a fun packed and scenic tram tour together!

憑著堅毅不屈的精神，四位學生在老師帶領下成功在四十七小時內完成100公里毅行者賽事。

Guided by teacher, 4 Hong Chi students successfully completed the 100 km Trailwalker trekking activity within 47 hours.



請支持匡智新界區賣旗日 2015.1.17

Support Hong Chi New Territories Flag Day

社會福利署署長已批准三間機構於2015年1月17日分別在港島區、九龍區及新界區賣旗，而匡智會已獲授權於當日在新界區賣旗。
The Director of Social Welfare has given approval to 3 organizations to sell flags on Hong Kong Island region, in Kowloon region and the New Territories region respectively on 17 January 2015, and Hong Chi Association is authorized to conduct flag sale in the New Territories region on that day.

匡智會一直致力為智障人士提供優質教育及適切培訓，讓他們得以發揮所長，為貢獻社會出一分力。2015年1月17日(星期六)舉行的匡智新界區賣旗日為本會慶祝50周年的首個大型籌款活動，我們懇請各位踴躍捐款支持，為本會籌募善款，持續為智障人士提供更多教育及訓練機會，以及推行公眾教育，鼓勵社會大眾認識及接納智障人士，當中包括：

- **教育心理學服務**：為智障學生提供專業評估，並為學童、青少年及其家庭提供心理支援及諮詢服務，以及內部教職員培訓，全面照顧學生的不同學習需要。
- **推行公眾教育**：致力向公眾宣揚共融精神，透過不同途徑提升大眾對智障人士的認識，接納他們成為貢獻社會的一分子。

The Hong Chi Association has been dedicated to provide quality education and training services that best serve the needs of people with intellectual disabilities, assisting them to lead an independent life and to give back to the community. We sincerely appeal for your kind support for our Flag Day on **17 Jan 2015 (Sat)** in the New Territories, one of our major fund raising events to kick start the Association's 50th Anniversary Celebrations. It aims to raise funds in support of the continuous provision of professional services by Educational Psychologists for students with special learning needs, as well as the public education and other much-needed services.

- **Professional service of Educational Psychologists** includes psycho-educational assessment, intervention with children, adolescents and their families, in-service training for teachers, consultation with parents, teachers and educational administrators in order to cater to the diverse learning needs of our students.
- **Public education programmes** to promote understanding and acceptance of people with intellectual disabilities as well as other much-needed services.

請支持智障人士融入社群，活出豐盛人生。謝謝支持！
Please ACT NOW to show your concern for people with intellectual disabilities. Thank you!

緊急呼籲 Urgent Appeal



回條 Reply Form

請在以下適當方格內填上 號，並以**正楷**填寫。
Please where appropriate and fill in the form in **CAPITAL** letters.

本人 / 機構願意捐款HK\$ _____ 以作響應。(捐款港幣\$100或以上將獲發收據以作扣減稅項之用)
I / We would like to donate HK\$ _____ in support of the event. (Official receipt will be issued for donation of HK\$100 or above for tax deduction)

捐款方法 Donation Method

網上捐款 By Online Donation

請登入「匡智會」網頁(www.hongchi.org.hk)
Please visit Hong Chi's website (www.hongchi.org.hk)

劃線支票 By Cheque

支票號碼 Cheque No: _____
(祈付:「匡智會」 Please make a crossed cheque payable to "Hong Chi Association")

現金存款 (敬請透過滙豐自動櫃員機捐款)

By Cash Deposit (please make your donation via HSBC ATM machine)
滙豐銀行戶口 HSBC account: **500-118351-009**
(請於自動櫃員機轉帳通知書上清楚寫上姓名 Please write your name on the ATM Customer Advice)

聯絡資料 Contact Information

姓名 Name: _____ (先生 Mr / 女士 Ms / 公司 Company)

傳真 Fax: _____

地址 Address: _____

只想以電郵方式收取本會資訊 Please send me further communications by email
以上資料只會作為發出收據及必須的聯絡使用，資料絕對保密。如不欲繼續收取本會通訊，請聯絡我們。
The information provided above is for issuing receipt and making necessary contact only. It will be kept in the strictest confidence. Please contact us if you do not wish to receive further communications.

請將填妥之回條 Please send the completed form:

1. 連同劃線支票寄回香港灣仔軒尼詩道15號溫莎公爵社會服務大樓705室匡智會傳訊及經費籌募部；或
With cheque to **Communications and Fund Raising Office, Hong Chi Association, Room 705, Duke of Windsor Social Service Building, 15 Hennessy Road, Wan Chai, Hong Kong**, or
2. 連銀行自動櫃員機轉帳通知書傳真至2866 0471 / 電郵至cfr@hongchi.org.hk / 郵寄方式交回本會籌募部，以便處理閣下之信用卡捐款
With ATM Customer Advice by fax to 2866 0471 / email to cfr@hongchi.org.hk / mail to our Communications and Fund Raising Office
3. 您亦可透過7-Eleven便利店捐款支持此活動。(只接受現金捐款，每次捐款額須為HK\$100或以上)
You can also make donation via any of the 7-Eleven outlets to support the event. (Cash donation of HK\$100 or above is accepted)

捐款恕不退還 Donations are non-refundable

匡扶智障 For People with Intellectual Disabilities

匡智會——前香港弱智人士服務協進會——本著「匡扶智障」的精神，竭誠為智障人士和他們的家庭提供服務。本會轄下共有13所特殊學校及68個服務單位，提供多元化服務予各級年齡和程度的智障人士。我們盼望得到您的鼓勵和支持，請與我們聯絡。

The Hong Chi Association – formerly The Hong Kong Association for the Mentally Handicapped – is dedicated to serving people with intellectual disabilities and their families. We operate 13 special schools and 68 other service units, providing comprehensive services to people of all ages and all grades of intellectual disabilities.

Offers of help and support are always welcome. Please contact us.

香港灣仔軒尼詩道15號溫莎公爵社會服務大樓705室
Room 705, Duke of Windsor Social Service Building, 15 Hennessy Road, Wan Chai, Hong Kong
電話 Tel: (852) 2661 0709 傳真 Fax: (852) 2866 0471
網址 Website: www.hongchi.org.hk 電郵 Email: cfr@hongchi.org.hk
香港稅局檔案號碼 Inland Revenue Department, HKSAR, File No: 91/466

Like us on Facebook



匡智會
Hong Chi Association



FWD
富衛



匡智會
Hong Chi Association
提供服務 FOR people with intellectual disabilities

FWD
富衛

FWD
富衛

FWD
富衛

FWD
富衛



富衛 x 匡智「活出我」計劃 FWD x Hong Chi "Live Up Today" Programme

衷心感謝富衛香港慷慨捐助每年一百萬港元，資助本會開展為智障兼患自閉症人士而設的「活出我」計劃，當中包括成立獎勵計劃、舉辦大型才藝表演及宣傳社會企業項目，讓公眾人士認識學員的多样化才能。

Sincere thanks to FWD Hong Kong for donating \$1 million annually to support our "Live Up Today" programme, which aims to assist people with intellectual disabilities in comorbidity with autism. The programme consists of scholarship funds, an annual talent show and marketing initiatives for our social enterprise projects to promote understanding of autism among the public as well as to develop trainees' versatile talents to the fullest.

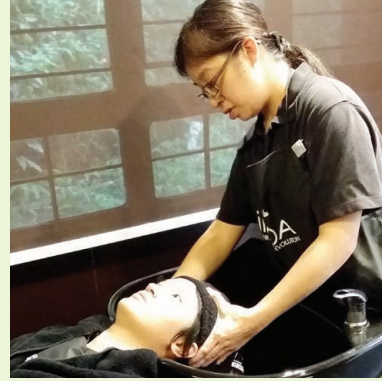
台灣學習交流之旅 Taiwan Exchange Programme

獲社會福利署社會福利發展基金資助，三位匡智粉嶺綜合復康中心同工前往台灣參加為期四天的園藝治療課程訓練，期望將園藝治療融入復康服務當中，從而提升智障學員的認知能力及改善身心健康。同工亦順道參觀台中及台北的復康機構，汲取當地推行園藝治療的成功經驗，藉以提升本會服務質素。

Funded by the Social Welfare Development Fund, 3 staff members from Hong Chi Fanling Integrative Rehabilitation Complex joined a 4-day study visit in Taiwan. Through taking the course, they have learnt to use horticultural activities as tools to enhance trainees' cognition skills and holistic wellness. Besides, the delegates have also paid visits to rehabilitation agencies in Taichung and Taipei, learning the successful experiences of our counterparts to enhance our staff professionalism and services quality.



全新美髮訓練課程 New Hair Grooming Training Programme



承蒙 L'Oréal Foundation 的慷慨捐助及支持匡智松嶺綜合職業訓練中心為學員設立髮廊訓練室，提供專業的美髮課程，從而提升學員在美髮美容行業的公開就業機會，更可擴闊學員的職業訓練及就業出路選擇，讓他們一展所長，成為貢獻社會的一分子。

With generous sponsorship and support from the L'Oréal Foundation, a hair grooming training salon was established in the Hong Chi Pinehill Integrated Vocational Training Centre. Trainees receive professional hair grooming training which can greatly enhance their competitiveness in the open market, and widen their options of vocational training and career development.

匡智樂齡服務 Hong Chi Elder Care Programme

本會與台灣的財團法人第一社會福利基金會合作，將去年發布的《匡智樂齡人生譜製作手冊》及《匡智樂齡遊戲治療篇》與當地同業共享，並把兩本參考教材編製成台灣版本，及製作光碟示範具治療元素的防跌運動，讓智障長者身心靈得到適切照顧。此外，十五位同工在社會福利發展基金資助下，前往台北及高雄當地的復康機構及社福單位實地交流，團員回港後舉行發布會，分享行程所得及經驗，藉以提升匡智樂齡服務的長遠發展。

By working in collaboration with The First Social Welfare Foundation in Taiwan, "Hong Chi Life Story Book" and "Hong Chi Therapeutic Games" have been adapted into Taiwan editions that included a CD-Rom demonstrating a series of anti-falling exercises to meet the needs of elderly trainees. In addition, a 15-member delegation sponsored by the Social Welfare Development Fund was sent to visit rehabilitation agencies and service units in Taipei and Kaohsiung. A report-back seminar was arranged to share participants' gains throughout the trip which helped facilitate the development of Hong Chi Elder Care Programme.





發展日有助新入職同工認識會方的信念及服務特色。
School orientation day enhanced staff members' understanding of the Association's vision and mission.

特殊學校多階層教育領導的培訓與發展計劃

本會於9月上旬舉行了「新入職學校員工導向發展日」，透過介紹會方教育服務的歷史發展、學校主要政策、智障學生特質、參觀松嶺村等等活動，讓近百位新同工認識會方的辦學理念及核心價值。

本會致力推動教學團隊的專業發展，這項為期兩年的計劃亦已圓滿結束。本會已整理培訓資料，並輯錄成書；又於12月13日舉行研究發布會，與全港學校、辦學團體和教育工作者分享計劃成果及交流心得。

Special School Leaders Development Programme

Our Association organized a "School Orientation Day" in September with nearly 100 new staff members attending. The event included talks on special schools development, school policies, characteristics of students with intellectual disabilities and a tour visit to Pinehill, giving participants an opportunity to understand our vision and our mission.

The 2-year programme which aims to foster professional development and growth of Schools' teaching staff has come to a successful conclusion. Details and findings of the programme has been written up and printed for sharing with schools, school sponsoring bodies and members of the education sector in an announcement event held on 13 December.

藝術共融樂展能 Art Workshops

衷心感謝利銘澤黃瑤璧慈善基金贊助本會「藝術共融樂展能」計劃，藉著「多嘗試、多觀察、多交流」的理念，學校於2014/15學年舉辦不同的藝術工作坊及參觀活動，拓闊學生的視野，讓他們學習更多課堂以外的藝術媒介和技巧，誘發他們獨特的藝術潛能。

Heartfelt thanks to Drs Richard Charles and Esther Yewpick Lee Charitable Foundation for sponsoring the Association to launch an inclusive art education programme. To encourage students to have "More Experience, More Observation and More Exchange", schools will organize a variety of art workshops and visits in 2014/15 for students to enrich their skills, broaden their horizons and unleash their artistic potential to the fullest extent.



閱讀悅FUN

承蒙伊利沙伯女皇弱智人士基金的鼎力資助，香港西區扶輪社匡智晨輝學校首度開發電子圖書應用程式，名為「閱讀悅FUN」。透過製作一系列有趣、切合智障學生能力，且兼備多種功能的電子圖書，藉以提升學生的閱讀興趣，進而養成良好的閱讀習慣。

公眾人士可在App Store 免費下載「閱讀悅FUN」應用程式。


E-Book App

Sponsored by the Queen Elizabeth Foundation for the Mentally Handicapped, the Rotary Club of Hong Kong Island West Hong Chi Morninghope School has developed an e-book app with interesting content and multifunctional features which not only fits well with the learning capacity of the intellectually challenged, but also arouses students' interest in reading as well as cultivating their reading habit.

The e-book app is free to download on App Store.

學生參觀香港3D奇幻世界，感受不一樣的視覺藝術效果！
Students had a fun-filled experience in HK 3D museum!



 衷心感謝政府、各商界及機構友好，以及熱心人士的支持，在2013/14年度，本會於各項服務方面均有理想發展。以下為本會於去年度的工作簡報：

特殊教育及兒童服務：

- 匡智學生參與澳洲紐卡素舉行的2013特殊奧林匹克亞太區運動會，並在游泳賽事中勇奪2金、1銅佳績
- 匡智學生於馬來西亞吉隆坡舉行的亞洲青少年殘疾人運動會2013上，奪得2金1銀的理想成績
- 匡智學生在老師帶領下參加樂施毅行者，成功於四十七小時內走畢100公里麥理浩徑
- 屬校聯合舉行首屆「匡智盃」足球比賽，讓學生可一展球技及培養團隊精神
- 屬校分別舉辦「童心創·晨曦夢」及「陶出心扉」學生作品展，展現學生獨特的藝術天分，並促進學生與社區人士的交流
- 兩所中度學校首辦聯校境外遊，共二十五位學生於4月中旬赴京探訪姊妹學校和參觀名勝古蹟，增廣見聞
- 香港西區扶輪社匡智晨輝學校製作電子圖書，學生可化身成為故事的主角，並可透過錄音、改寫和互動遊戲功能，進一步提升閱讀樂趣
- 「匡智溝通易」應用程式榮獲「2014年度中國香港自閉症資訊通信科技教育傑出項目大獎」

成人服務：

- 發布《匡智會智障人士之通用就業能力評估工具》使用手冊，以具系統方法評估學員的就業能力，提升就業轉介服務成效及僱主信心
- 玻璃樽回收計劃於261個回收點，收集逾1,029噸由住宅及商業用戶棄置的玻璃樽，並為160位學員提供訓練及就業機會
- 展開為期三年的「匡智賽馬會綠色教育計劃(幼稚園及特殊學校)」，向幼稚園及特殊學校學生宣揚綠色生活
- 獲贊助於匡智山景中心設置感覺統合訓練設施，讓感統失調的學員得到適切訓練
- 獲贊助於匡智松嶺綜合職業訓練中心設立髮廊訓練室及開辦全新美髮課程，提升就業機會及出路選擇
- 匡智粉嶺綜合復康中心開辦全港首個專為智障人士而設的動物輔助治療，促進身心靈全人發展
- 《匡智樂齡人生譜製作手冊》及《匡智樂齡遊戲治療篇》獲編製成台灣版本，將樂齡服務的研究成果與台灣同業共享
- 「愛不止息」智障人士農耕社區關懷計劃同工獲邀到北京出席分享研討會，與內地同工及大學生交流服務經驗及得著
- 匡智粉嶺綜合復康中心成立十周年，並舉辦一連串公眾活動及分享會，與社會人士及業界分享服務經驗及心得
- 舉辦多個交流活動及探訪海外復康機構，加深了解不同地區為智障人士提供的復康服務，相互切磋及學習
- 匡智義工隊各支隊為社區及有需要人士舉辦共233個義工活動，提供共15,743義工服務時數


社會企業：

- 為智障人士提供共四十五個就業及三十八個實習機會
- 匡智佳味糕餅於2014年5月正式遷往火炭新址，寬敞的全新廚房環境為更多學員帶來實習及就業機會；並增加製餅效率和產品多元化
- 成立辦公室支援服務隊，讓學員在真實的辦公室環境下實習及就業，提升工作能力
- 推出母親節紅莓曲奇，鼓勵愛心消費，讓大眾認識智障人士的能力

公眾教育：

- 圓滿舉辦第十一屆「匡智競步上雲霄」慈善跑樓梯大賽，逾380位健兒報名參賽，共籌得逾150萬元善款，創歷屆新高
- 再度舉辦公開慈善曲奇義賣活動，籌募善款外，更讓智障人士有機會向公眾展現多方面才華
- 獲贊助製作全新匡智會宣傳片，加深社會大眾對智障人士的認識和接納
- 透過舉辦不同類型慈善籌款活動及安排熱心人士提供義工服務，藉以促進社會共融及公眾對智障人士的了解

感謝你們的支持，我們將繼續努力，為智障人士及其家人盡心服務！

 Sincere thanks for the support of government, caring corporations, organizations and the public. Remarkable results have been achieved in the various aspects of our services last year. Below is a summary of the Association's accomplishments over the year:

Special Education & Children Services:

- Hong Chi students won 2 Gold and 1 Bronze medals (Swimming) at the Special Olympics 2013 Asia Pacific Games (Newcastle, Australia)
- Hong Chi students won 2 Gold and 1 Silver medals at the Asian Youth Para Games 2013 (Kuala Lumpur, Malaysia)
- Guided by teachers, Hong Chi students successfully completed the 100 km MacLehose Trail at the Oxfam Trailwalker trekking event within a time of 47 hours
- Schools organized the first "Hong Chi Cup" soccer competition to unleash students' sporting talent and enhance team spirit
- Schools organized a visual arts exhibition and a pottery exhibition to showcase students' creativity and artistic potential, as well as to promote exchange between students and the public
- 2 moderate grade Schools organized their first-ever joint Beijing study tour for 25 students in April, widening students horizons by visiting sister schools and heritage sites
- School developed an e-book app to enable students to discover the fun of reading through the app's interactive games and multifunctional features
- The Hong Chi Communication App was honoured with the "2014 Outstanding Education Award for Information and Communication Technology for Autism in Hong Kong"

Adult Services:

- Launched the "Hong Chi Employability Assessment Tool" to assess trainees' work abilities in a systematic manner, increasing the effectiveness of job matching services and employers' confidence in hiring people with intellectual disabilities
- The glass bottle recycling team collected over 1,029 tonnes of used glass at 261 collection points, creating job opportunities for 160 trainees.
- Launched the new three-year "Hong Chi Jockey Club Green Education Campaign (Kindergarten and Special School)" to convey a green message to kindergarten and special school students
- Sponsored the setting up of sensory integration training facilities at Hong Chi Shan King Centre to provide effective training to needy trainees
- Sponsored to set up of a training salon and programmes at Hong Chi Pinehill Intergrated Vocational Training Centre to enhance trainees' employability in the open market
- Hong Chi Fanling Rehabilitation Complex launched the first Animal-assisted Therapy programme to provide training to trainees in a holistic approach
- 2 publications entitled "Hong Chi Life Story Book" and "Hong Chi Therapeutic Games" have been adapted into Taiwan editions to share our Elder Care Programme's experience with counterparts in Taiwan
- Were invited to join a sharing session in Beijing to share our gains in the "FARMnCARE with Everlasting Love" Campaign
- Hong Chi Fanling Integrative Rehabilitation Complex celebrated its 10th anniversary and organized a series of public activities and sharing events to share experience and gains over the past decade
- Organized exchange tours and visits to learn from overseas counterparts and further enhance our services quality
- The Hong Chi Volunteer Team organized 233 volunteer activities, providing over 15,743 hours of voluntary services

Social Enterprise Projects:

- Provided 45 employment and 38 training placement opportunities for people with intellectual disabilities
- Hong Chi Gourmet Bakery has moved to a new site at Fo Tan to create more working and training opportunities for trainees, as well as to enhance productivity and product variety
- Set up an Office Support Service Team to enable trainees to receive training in a real-life environment
- Launched the special Mother's Day cranberry cookies to encourage socially responsible shopping and to raise public awareness of intellectually challenged people's work abilities

Public Education:

- Held the 11th anniversary "Hong Chi Climbathon" Charity Stair Run, which attracted more than 380 participants to run for a good cause and raised over 1.5 million in support of our work
- Organized the Hong Chi Charity Cookies Sale to raise funds to support our work and to showcase the diverse talents of people with intellectual disabilities
- Sponsored to produce the new Hong Chi Association's video to appeal to public support and respect towards people with intellectual disabilities
- Promoted social integration and public understanding of the people we serve through organizing various charity activities and volunteer events

Thank you for your support! We will continue to strive for our goal of providing quality services to people with intellectual disabilities and their families.